

FALL
2017

Native Plant Spotlight:



American Cranberry Bush
(*Viburnum opulus* var. *americanum*)
Photo By: www.nwplants.com

The Columbia SWCD presents: “The Dirt”

One Hole Closes and Another One Opens

Fox Creek Sinkhole Repair:

The Columbia SWCD finished work on an emergency repair project in Rainier this summer. An underground culvert containing Fox Creek blew out causing a large sinkhole to form in the parking lot of several businesses along Hwy. 30 and C Street. Crews excavated and removed the heavily damaged pipe replacing it in kind. Heavy rains last fall forced the Columbia SWCD to delay project completion until May of this year. The Columbia SWCD became involved in this project for the purposes of restoring safety to the people, roads, and businesses in the area, and improving stream flow.



Above: Damaged and mangled pipe removed from Fox Creek. The culvert was drastically undersized for the flow levels it experienced.



Right: Crews replacing sections of the pipe inside the enormous sinkhole stabilized by large shoring boxes.

Clatskanie River Crossings Culvert Replacements:

This summer the Columbia SWCD will complete work on its third and final phase of its Clatskanie River Crossings project along Schaefer and Willark Roads. This project entails the replacement of 6 undersized culverts that represent various levels of impediments to fish trying to access upstream spawning and rearing habitat. Both of the crossings under construction this summer are being replaced with bottomless arch culverts which allow for the space, slope, and streambed complexity fish need to swim upstream. In totality this project will have opened up close to 10 miles of valuable upstream habitat for several salmonid species including Coho, Steelhead, and Cutthroat. These modifications will also restore more natural flow and velocity to the river resulting in less erosion and scour, improved sediment transport, floodplain connectivity, and generally healthier aquatic and riparian ecosystems.



Top: Crossing 5 before construction.

Bottom: Crossing 5 during construction. The bottomless structure will support the weight of logging trucks while allowing for optimal fish passage.

CONTENTS

Schedules/ Staff Directory/ Up-Coming Events	2
Testing the Waters/ Keep On Growing	3
Fishing Out Carcass Creek/ Weeding Out Spurge Laurel	4
Thoughts from the Staff	5
ID Your Weed	6

Get Involved

Local Board Meetings:

Columbia Soil and Water Conservation District:

3rd Wed. of the month at 7:00 p.m. at their office in Saint Helens

Scappoose Bay Watershed Council:

1st Tue. of the month at 7:00 p.m. at their office in Scappoose

Lower Columbia River Watershed Council:

2nd Tue. of the month at 7:00 p.m. at the Columbia SWCD office

Upper Nehalem Watershed Council:

4th Thur. of the month at 7:00 p.m. at Vernonia High School

CSWCD STAFF

District Manager

Kari Olsen-Hollander

Assistant District Manager

Malyssa Legg

Senior Resource
Conservationist

Nathan Herr

Resource Conservationist

Monica Blanchard

Outreach Coordinator/
Field Technician

Crystalyn Bush

Office Assistant

Jennifer Steinke

Field Restoration Ecologist

Jenny Dezso

Lower Columbia River
Watershed Coordinator

Selene Keeney

NRCS STAFF

District Conservationist

Don Mehlhoff

Program Support Tech

Dee Robinson

Soil Conservationist

Angela Reseland

CSWCD BOARD

Chair:

Craig Ellis

Vice Chair:

Bill Eagle

Treasurer:

Kay C. VanNatta

Secretary:

Lona Pierce

Director:

Dave Freytag

Director:

Randy Bergman

Director:

Jason Busch

UP-COMING EVENTS

10/7/17 9:30 a.m. - 4:00 p.m.: Fall Festival & Pumpkin Patch, St. Frederic Church, St. Helens

Enjoy festive games, food, entertainment, vendors, and hay rides. Free admission and fun for the whole family. Contact stfred@comcast.net or 503-397-2791 for more information.

10/8/17 1:00 p.m.: Low Water Gardening Class, Joy Creek Nursery, Scappoose

Learn about how to design a beautiful low water garden during this 2 hour workshop. Call 503-543-7474 to RSVP. Cost is \$10 at the time of the event.

10/14/17 9:00 a.m. - 3:00 p.m.: SBWC Native Plant Sale, Nursery Behind Scappoose High School

Want to add some beautiful and beneficial native plants to your garden? Come by and check out Scappoose Bay Watershed Council's native plant sale. Call or email Amber for more information at amber@scappoosebay-wc.org or 503-397-7904.

10/28/17 8:00 a.m. - 12:00 p.m.: Household Hazardous Waste Collections, Columbia County Transfer Station

Dispose of assorted hazardous waste items for free. For a list of accepted items contact Kathy at (503) 397-7259.

11/4/17 1:00 p.m. - 4:00 p.m.: Friends of Nob Hill Work Party, Nob Hill Park, St. Helens

Help keep Nob Hill beautiful by volunteering a few hours of your time to pull weeds and maintain trails at one of St. Helens few nature parks. Meet at the front entrance of the park. Dress appropriately; bring gloves and water.

TESTING THE WATERS

The Columbia SWCD, in partnership with the Lower Columbia Estuary Partnership, recently implemented a water quality sampling program. This program is initially being funded by a grant from the Department of Environmental Quality.

The measurements being taken include temperature, turbidity (a measure of how clear the water is), and bacteria presence. Sampling sites are based on watersheds where future restoration projects are planned, as well as ease of access to the water, and landowner participation. This program will establish baseline conditions in these creeks, rivers, and watersheds; something that is crucial as the Columbia SWCD moves forward with its Regional Conservation Partnership Program in the coming years. Data from the sampling will be used to inform decisions about the location of future project sites, the types of projects that will be most beneficial, evaluate the effect of restoration efforts on water quality, and to indicate if and where a change has occurred in the watershed that is affecting water quality.



Staff members from the Columbia SWCD and LCEP install temperature probes at selected sites. Staff will go out once a month to download the data.

KEEP ON GROWING

Summer is coming to an end but you can keep your garden goodness going. As the nights get cooler and the air gets crisper, what sounds better than homemade soup with home-grown veggies? Here is a list of some things that like the shorter daylight hours.

Seed Outdoors

August: Arugula, Asian greens, Beets, Broccoli raab, Cauliflower, Cilantro, Collards, Kale, Lettuce, Mustard greens, Peas, Radish, Salad greens, Swiss chard, Turnips

September: Arugula, Asian greens, Beets, Cabbage (over wintering), Endive, Fava beans, Garlic (cloves), Lettuce, Kale, Onions (sets), Radish, Salad greens, Shallots (bulb)

October: Fava beans, Garlic (cloves), Onion (sets), Shallots (bulb)

November: Fava beans, Garlic (cloves), Onion (sets), Shallots (bulb)

Transplant

August: Artichokes, Asian greens, Cilantro, Kale, Leeks, Lettuce, Mustard greens, Salad greens, Scallions, Spinach

September: Kale, Lettuce, Salad greens, Sorrel

October: Bok choy, Cabbage (over wintering), Lettuce, Salad greens



(Information obtained from Portland Nursery's veggie calendar at <http://portlandnursery.com>. Check it out for more detailed information about best planting times and methods.)

FISHING OUT CARCUS CREEK

Fish salvage is a typical aspect of many of the Columbia SWCD's projects. Prior to performing work in the water actions are taken to preclude fish from entering the project area and to remove fish currently in the area to prevent casualties.

Fish (as well as other animals like frogs and salamanders) are taken to a downstream location and released. Typical fish salvage includes the installation of exclusion fencing, seining, and electroshocking with nets. Fish are then counted by species for purposes of data collection and removed from the area.



Left: The catch resulted in some sculpin (the smaller fish you see), young Coho and Steelhead, and even a few Giant Pacific NW salamanders.

Right: Resource Conservationist Monica Blanchard finds a mayfly. Monica and Crystalyn set up the upstream exclusion net.



WEEDING OUT SPURGE LAUREL

On a couple very hot July days the Columbia SWCD and a dedicated crew from the Columbia River Youth Corps. tackled a large Spurge laurel infestation on a commercial property in Saint Helens. Using only their hands, a few weed wrenches, and a couple pairs of loppers the crew pulled and bagged almost half a ton of spurge laurel in two days. Spurge laurel is highly toxic to humans and animals and is well-suited to forest environments. If you have seen Spurge laurel please report it to our Invasive Species Hotline at **1-800-741-6105**.



[Ask About Renting Our Weed Wrenches!](#) They are great for pulling out shrubby weeds like [Spurge laurel](#) or [Scotch broom](#) that are too large to handpull. For more information email weeds@columbiaswcd.com or call and ask for Crystalyn.

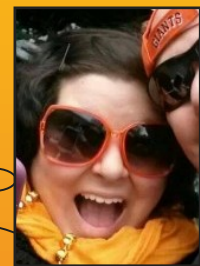
Thoughts from the Staff

Tell us about a fond fall memory you have involving family or food or both.

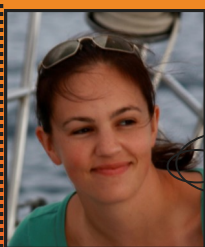


“I love harvesting squash from the garden, watching the leaves turn, and making tasty baked goods with apples and pumpkins. My favorite thing to make is pumpkin cookies with maple frosting. I make them all year, but they are just better in the fall! I love bringing them to potlucks and sharing with friends. The cookies just taste better when it is chilly and the air is a little crisp and you are sitting around a camp-fire.” - Monica

“My favorite fall memory is carving pumpkins. I think I enjoyed scooping out the ‘guts’ most of all. I always wanted to roast the seeds. Every year we did and I hated them. Then next year I would ask to do it again. I still don’t like them!” - Malysa



“When I was growing up we had several large apple trees on our property. So every fall we would borrow an old press from some neighbors and spend a night making homemade apple juice. My mother would cut the apples in quarters, my sister and I would push the slices through the press and laugh about the gross leftover apple mush, and my dad would pour the juice into jars and label them. The whole house would smell like apples for days.” - Crystalyn



“I love fall! The weather is amazing and the harvest is crunchy, sweet, and a little savory. A great memory of mine: Desert mornings, crisp air, sitting on the back patio watching the sun rise over the mountains, sipping coffee with a side of fresh pumpkin bread, watching the first hot air balloons of the season go up in the distance, and feeling excited that my daily tennis game would not be played in 110 degree heat.” - Kari



Columbia SWCD
35285 Millard Road
St. Helens, OR 97051

Non Profit
Organization
U.S. Postage
PAID
St. Helens, OR
Permit # 128

If you would prefer to receive our newsletter electronically, please send a request to Crystalyn.bush@columbiaswcd.com.

Contact us:

Address: 35285 Millard Rd., St. Helens, OR 97051
Phone: 503-433-3205 **Email:** information@columbiaswcd.com
www.columbiaswcd.com



ID YOUR WEED



SPURGE LAUREL

Invades forestland and shaded areas. Creates dense stands. Long-lived, evergreen shrub. Blooms in late winter/early spring. Seeds mainly dispersed by birds. Toxic to humans and animals. Sap can cause contact dermatitis.



GORSE

Invades forestlands, parks, pastures. Perennial evergreen shrub. Branches are covered in sharp thorns. Yellow pea-like flowers may be visible year round. Can form dense thickets. Please report sightings of these plants to our Invasive Species Hotline: 1-800-741-6105 or to weeds@columbiaswcd.com.



FALSE BROME

Invades forestland, drought and shade tolerant, restricts tree regeneration, outcompetes natives. Seeds mainly dispersed by wildlife and logging activities. In winter leaves look bleached white. Potentially toxic to livestock.

* Before performing weed control it's a good idea to always: 1) Check with local experts to ensure accurate plant identification; 2) Research effective and appropriate control methods; 3) Wear protective clothing when working with plants, and 4) Seek advice before using herbicides.*