

Step 1:

Detach the heat shield from the clamp light and replace it with a protective housing if desired.



Step 2:

Drill four 1/4 in holes evenly spaced around the bucket wall approximately 2-3 inches below the lip of the bucket.

Slide the bolts into these holes and secure them with the nuts. This will provide the seating for the funnel.

Step 3:

Place the funnel (or detached heat shield from the clamp light) into the bucket so that it does not rest on the bottom of the bucket.

Attach the light clamp to the side of the bucket and angle the light so it rests above the center of the bucket and place the trap in an appropriate collection area. Ideally you will want to find a location within sight of the hive, but covered against rain. Plug in your light to begin collecting ZomBees!



Columbia SWCD
35285 Millard Rd.
St. Helens, OR 97051
503.397.4555
columbiaswcd.com



The Columbia SWCD Presents:

Attack of the ZomBees!

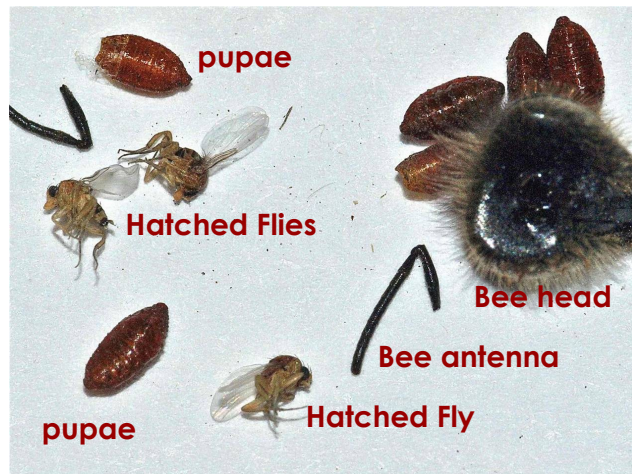


Learn what to look for and what you can do to help stop the honey bees from Zombie Fly infestation.

What is a ZomBee & What Can I do?

The Phorid Fly or *Apocephalus borealis* is actually native to the state of Oregon, but is only recently observed to make the jump to honey bees. It injects it's larvae into a worker bee, and once the eggs inside hatch and begin to grow, the bee will make its final flight from the hive. Infected bees are observed showing unusual behavior, such as flying around at night and being attracted to light sources. The infected bees will typically die quickly and are commonly found underneath a source of light or within a light trap.

Recently, researchers at San Francisco State University and OSU have been conducting research to determine the extent of the ZomBee infestations and need the help of citizen scientists to collect data and bee samples throughout the country. The Columbia SWCD can provide assistance for Columbia County residents to set up light traps and get established as a Citizen Scientist. You can create your own account at www.zombeewatch.org, or bring your samples into the SWCD office (and we'll handle them from there).



Creating a light trap:

You will need:



Incandescent Clamp Light

Description:

Lamp should have a detachable Lamp Shield and Clamp. Its width should be ~ 1 inch less than the width of the bucket mouth.

~ \$8.50



13-Watt (60W) CFL Black Light Bulb

Description:

The spiral-shaped bulb and wave-lengths of light produced are ideal for attracting bees at night.

~ \$5.00



2-Gallon Plastic Pail

Description:

A two gallon bucket will suffice, but a five gallon bucket may be used. Make sure that your funnel or heat shield is slightly smaller (~1 in) than the open end of the bucket.



4 1/4 in. x 1 1/2 in. Hex Bolts (~\$.17ea) and Nuts (~\$.06ea)

Description:

Drill 4 1/4 in holes in the bucket and attach the screws

How to assemble: